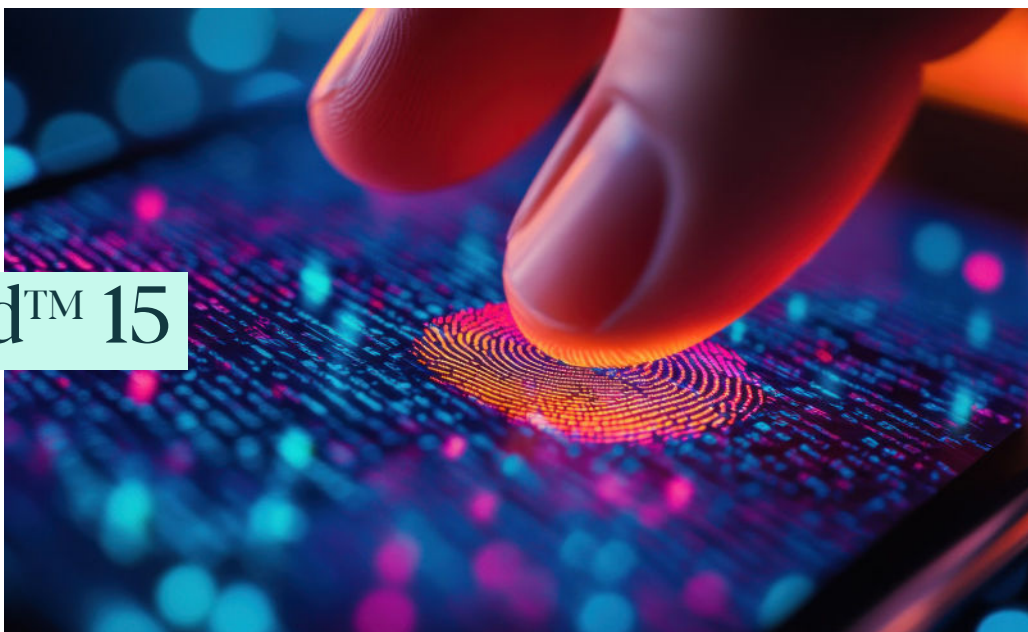


# Streamlining the **Androited™ 15** biometric certification process.



## top 200

Forbes  
Best Under A Billion in Asia

### Sector

Biometric solution provider,  
IC design provider, and  
Semiconductor IP company

### Expertise

Biometrics, IC design and  
Semiconductor IP

### Services used

Consulting  
Testing services

\*Android is a trademark of Google LLC.

## About Egis

Egis is a global semiconductor group offering integrated circuit (IC) design and software based on FIDO standards. It specializes in the design of optical and capacitive fingerprint sensors. Today, Egis sensors can be found in various consumer electronic devices such as smartphones, PCs and tablets, as well as in automobiles.

## The challenge

As a key player in the biometric sensor industry, Egis needs to move quickly to ensure its fingerprint sensors are compliant with the latest Android CDD (Compatibility Definition Documents). This is essential to staying competitive and conducting business at the highest level in the Android community, while ensuring that the evolving needs of customers are being met.



Fime's frictionless testing capabilities and seamless local communication helped us to achieve compliance for our sensors while meeting the rigorous manufacturer lead times. This technical expertise coupled with our trusting relationship combined to help us save time and money while delivering a state-of-the-art product.



**Karen Chang**

Vice President of Government Relations & Public Relations  
Egis



## Why Fime?



Fime is a recognized lab by Android.



Fime is an active member of the FIDO Alliance certification working group.



Fime could drive this project to completion, with the resources and flexibility to respond to the challenges.

## Customer requirements

To retain its place at the forefront of the market, Egis needed to make sure its offer was compliant with the latest Android requirements in the shortest timeframe possible without compromising on its high standards of performance, security and customer satisfaction.

Egis therefore tasked Fime with creating an offer that meets its need for high-quality biometric testing and certification that prioritized both cost savings and time efficiency.

## Fime's solution

First, Fime offered comprehensive workshops to help Egis understand and prepare effectively for the latest Android biometric security requirements. This preparation helped optimize the testing process, enabling Egis to save costs and reduce time to market.

Fime also developed a customized test kit, enabling Egis to carry out its in-house debug testing seamlessly.

To facilitate the testing process, Fime developed an automated testing bench to validate the quality, performance and security in line with the requirements of Android CDD.

## Working with Fime

Throughout the project, Fime:

- Provided flexible end-to-end support, from timely and high-quality consultancy to testing services, giving Egis access to its expertise throughout the project.
- Utilized its extensive knowledge of the ecosystem to recommend how compliance with the necessary requirements could be achieved quickly and efficiently.
- Used its previous experience with ISO/IEC 30107, ISO/IEC 19795 and other accreditations to help Egis to meet industry best practices.
- Provided support in the local language thanks to its presence in Taiwan.

## Making innovation possible.

With our global perspective, we combine our consulting and disruptive testing expertise to enable our clients to develop build and launch trusted digital payment experiences solutions across payments, smart mobility and digital identity.

To learn more about how Fime can help your business:

visit [fime.com](https://fime.com)

or contact [sales@fime.com](mailto:sales@fime.com)